

Average Percent Yearly Increase in Expenses

Oil:

8.34% from 1996 to 2010

4.95% from 1996 to 2004

Water:

4.21% from 2000 to 2010

COLA: This is the CPI-W increase which is what social security uses to determine the COLA

4.11% from 1974 to 2010 COLA (cost of living adjustment)

Overall increase with Oil as 25%, Water as 15%, and Other as 60% of total costs

Expected increase in cost assuming 1996 to 2004 oil costs

4.33%

Expected increase in cost assuming 1996 to 2010 oil costs

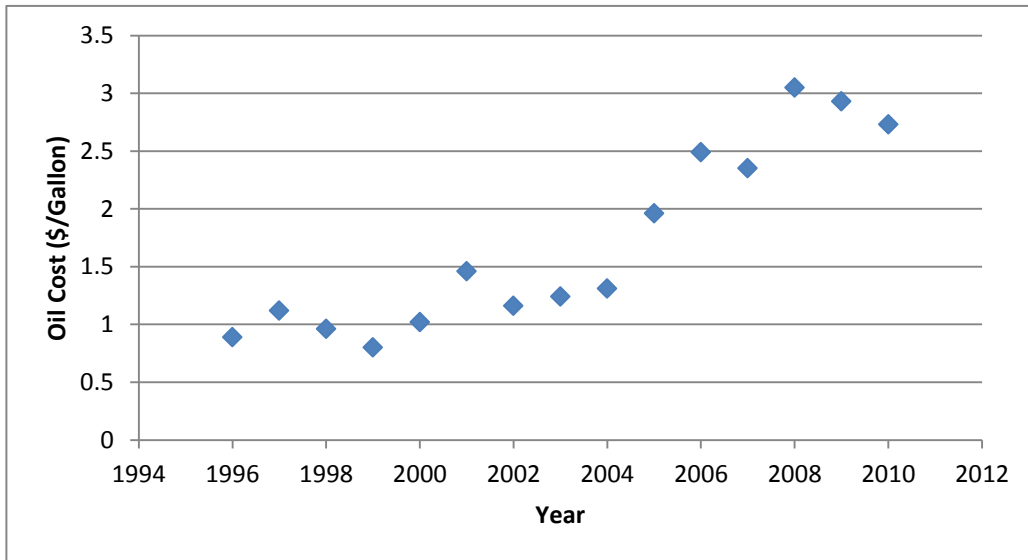
5.18%

Increase used for Budget

3.00%

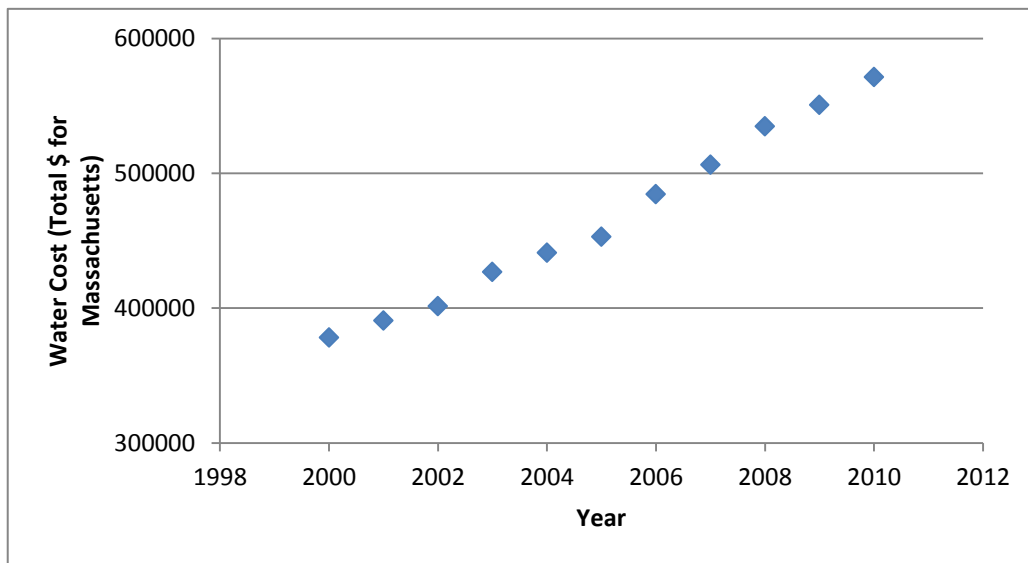
Oil

	\$/gallon	Average Percent Yearly Increase
2010	2.73	1.083352 from 1996 to 2010
2009	2.93	
2008	3.05	
2007	2.35	
2006	2.49	
2005	1.96	
2004	1.31	1.049507 from 1996 to 2004
2003	1.24	
2002	1.16	
2001	1.46	
2000	1.02	
1999	0.8	
1998	0.96	
1997	1.12	
1996	0.89	



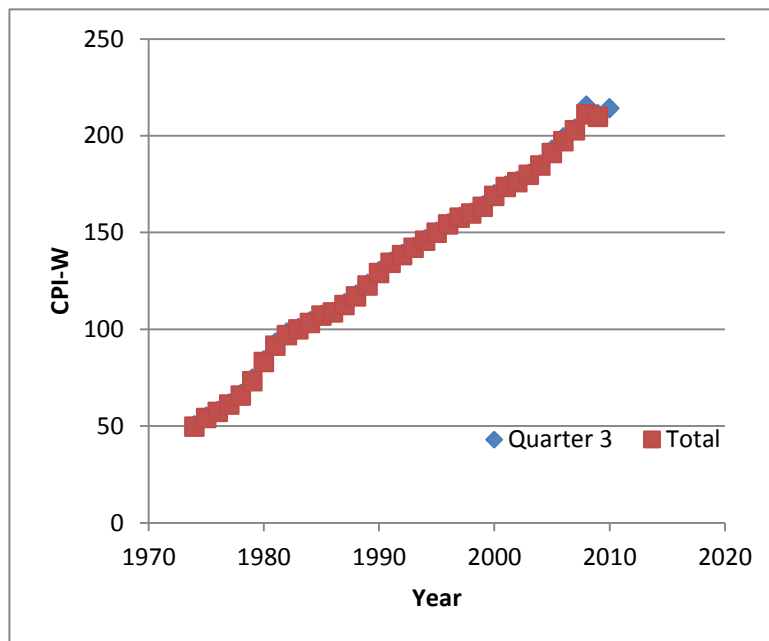
Water

Year	Water Cost	Average Percent Yearly Increase
2010	571360	1.042136 from 2000 to 2010
2009	550720	
2008	534809	
2007	506354	
2006	484529	
2005	452802	
2004	440949	
2003	426666	
2002	401391	
2001	390718	
2000	378150	



COLA

Year	Quarter 3	Total
1974	50.3	49.592
1975	54.7	54.133
1976	57.667	57.225
1977	61.533	60.942
1978	66.4	65.575
1979	74.4	73.067
1980	83.9	82.925
1981	92.9	91.425
1982	98.167	96.9
1983	100.533	99.842
1984	104.067	103.258
1985	107.333	106.917
1986	108.7	108.575
1987	113.267	112.483
1988	117.8	116.95
1989	123.333	122.583
1990	129.9	129.025
1991	134.7	134.25
1992	138.767	138.158
1993	142.367	142.058
1994	146.4	145.642
1995	150.233	149.758
1996	154.633	154.142
1997	157.867	157.558
1998	160	159.658
1999	163.933	163.233
2000	169.7	168.892
2001	174.133	173.517
2002	176.567	175.875
2003	180.3	179.808
2004	185.1	184.483
2005	192.7	190.975
2006	199.067	197.142
2007	203.596	202.767
2008	215.495	211.053
2009	211.001	209.63
2010	214.136	



1.04106 Average COLA increase per year from 1974 to 2010